



Features and Services

- * Meals & Snacks
- * Utilities & Security
- * General Maintenance & Housekeeping
- * Cable Television & Mail Service
- * On-site Salon & Barber Services
- * Transportation to appointments
- * 24-hour emergency response system
- * Single level floor plan
- * 24-hour staff
- * Scheduled exercise sessions and special entertainment
- * Medication monitoring with licensed nurse on staff
- * Patios and porches
- * Religious Services
- * Life Enrichment Programs
- * State Licensed
- * Southern Rehab Services located adjacent to personal care homes for physical, speech and occupational rehab

Location, Location, Location

Enjoy your golden years where the Blue Ridge Mountains provide the backdrop for a quality retirement community. Beautiful, serene surroundings close to many northeast Georgia scenic attractions, our residents can enjoy shopping excursions, recreational outlets or an afternoon ride to view the autumn leaf color. Most major thoroughfares such as I-985, I-85 and US 441 are within easy driving distance making access convenient for families and friends.



The Wilkinson Center

The Clary Care Center

249 Hospital Drive ~ Toccoa, GA 30577
 706-282-5600 PHONE ~ 706-886-0328 FAX
 Email: hknight@stephenscountyhospital.com
 www.stephenscountyhospital.com/services/personalcare

The Wilkinson Center
The Clary Care Center

Independent Living
Personal Care
Assisted Living



The Wilkinson Center

It Feels Like Home

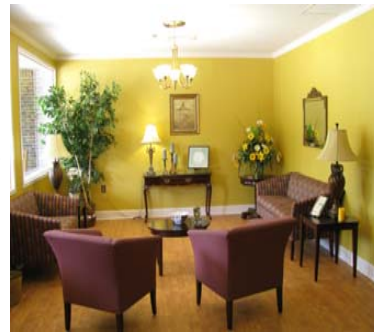
Come and go as you please without the hassles of home ownership. No property taxes, utility bills, lawn care or maintenance issues! The Wilkinson Center is a 40 unit retirement living facility where each resident has their own apartment, patio and parking space with several floor plan options. Rocking chair porches plus a central living room with a big screen TV and fireplace add to the feel of southern hospitality. Entertain family and friends in the dining room or in the privacy of your own apartment. Plan your own days or enjoy scheduled activities and exercise programs with other residents in an extended family environment—either indoors or outside. Once you choose the floor plan you desire, move in your own home furnishings to add that final “feels like home” touch. Each apartment also has individual heat and air units adjustable to each resident’s desires. Two emergency call stations are located in each apartment just in case help is needed.



The Clary Care Center

Special by Design

The Clary Care Center is a 42 bed assisted living facility designed for residents who have some physical limitations or just need help with daily tasks requiring more hands-on care with bathing, dressing and feeding. Suites are available in private and semiprivate living arrangements and come furnished with a hospital bed for comfort and safety. We offer residents as much of an independent lifestyle as they can comfortably manage along with a maintenance-free environment and a variety of optional services. The services available at Clary can help prevent nursing home care before it is absolutely necessary.



Rich furnishings add to the “feels like home” environment.



Your Staff

Experience counts

Knowledgeable and caring staff provide assistance with residents as well as supervise their self-administered medications—24 hours a day, seven days a week. But this isn’t where it ends. Our staff also attend picnics, shopping excursions and field trips with residents to assure their safety along the way. Licensed nursing staff provide monthly health assessments and maintain open communication with the family and their physician during those times your loved one isn’t feeling their best. Our Life Enrichment Coordinator plans activities specifically designed to maintain and improve the cognitive capabilities and physical mobility of our residents. Owned and operated by Stephens County Hospital and located on the hospital campus, emergency care is literally steps away.



*Hayley Knight
Personal Care Homes
Manager*

